**ADDENDUM 1**

Addendum #	1	Date Issued	10/27/2021
Project Name Job #	UND O'Kelly/Ireland/Gillette Hall Link Addition		20203351
Bid Date Time	November 2, 2021		

THIS ADDENDUM AMENDS AND BECOMES PART OF THE CONTRACT DOCUMENTS FOR EAPC PROJECT 20203351 DATED 10/07/2021, RESPECTIVELY. EACH BIDDER SHALL ACKNOWLEDGE RECEIPT OF THIS ADDENDUM BY MARKING THE ADDENDUM NUMBER AND DATE ON THE BID FORM.

SPECIFICATIONS

None

DRAWINGS

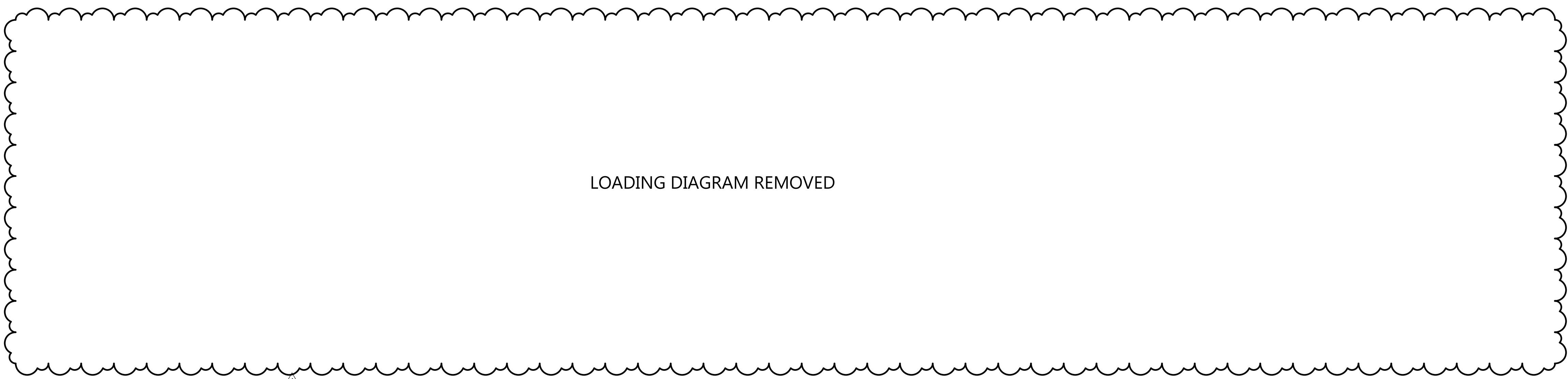
S203 Revised loading, see attached sheet.

APPROVED EQUALS

None

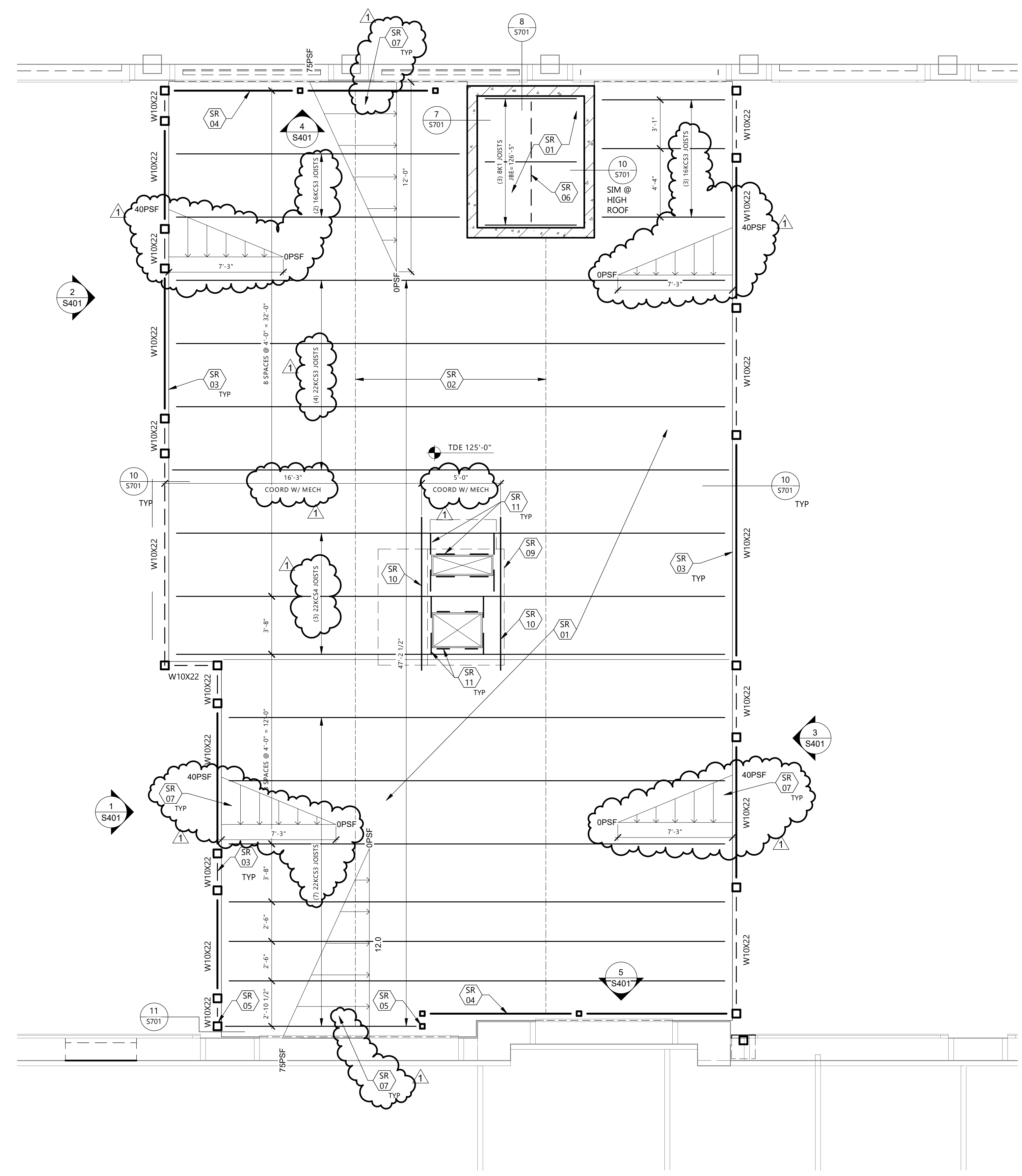
ATTACHMENTS

S203

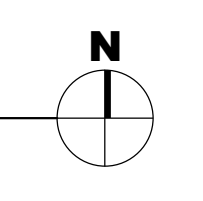


- KEYNOTE LEGEND:**
- ◊ ◊ ◊ INDICATES KEYNOTE ON PLAN
 - SR 01 1 1/2"x20 GA TYP 'B' (WIDE RIB) METAL ROOF DECK W/ 5/8"Ø PUDDLE WELDS ON A 36/4 PATTERN & (1) #10 TER SCREW PER SIDELAP PER SPAN. FASTEN DECK TO PERIMETER FRAMING W/ 5/8"Ø PUDDLE WELDS @ 12" O/C. PROVIDE 3-SPAN CONDITION (MINIMUM) WHERE POSSIBLE.
 - SR 02 HORIZONTAL JOIST BRIDGING. JOIST SUPPLIER SHALL AS A MINIMUM, PROVIDE THE NUMBER OF ROWS SHOWN ON PLAN UNLESS MORE ROWS ARE REQUIRED.
 - SR 03 CONTINUOUS 4x4x1/4 ANGLE AT ROOF EDGE.
 - SR 04 BRACE FRAME LOCATION. SEE SHEET S401 FOR MORE INFORMATION.
 - SR 05 PROVIDE 3/4" THICK COLUMN CAP PLATE W/ (2) 1/2"Ø A307 BOLTS TO JOIST. FIELD WELD JOIST TO CAP PLATE W/ 2 1/2" LONG x 1/4" FILLET WELDS @ EACH SIDE OF JOIST SEAT. TOP OF COLUMN/JOIST BEARING = 124'-8".
 - SR 06 W8x10 ELEVATOR HOIST BEAM. TBE = 125'-8".
 - SR 07 SNOW DRIFT LOADS IN ADDITION TO BASE SNOW LOAD GIVEN ON SHEET S001.
 - SR 08 6" LIGHT GAUGE METAL STUD WALLS BY LIGHT GAUGE STUD PROVIDER.
 - SR 09 OUTLINE OF MECH UNIT, WEIGHT = 1,890 LBS. (VERIFY)
 - SR 10 C12x20.7 CHANNELS NESTED IN DECK FLUTES BELOW MECH UNIT CURB. EXTEND CHANNELS 4" PAST ¼ OF LAST SUPPORTING MEMBER @ EACH END. SEE DETAIL 14/S701 FOR CHANNEL FASTENING & 11/S701 FOR JOIST CHORD REINFORCING @ CHANNEL LOCATION.
 - SR 11 MECH PENETRATION - VERIFY EXACT SIZE AND LOCATION W/ CONTRACTOR. SEE DETAIL 15/S701 FOR WELDED ANGLE FRAME DETAIL @ ROOF DECK LOCATIONS.

TOP OF BEAM ELEVATION = 124'-8" UNO.



1 ROOF FRAMING PLAN - LINK
S203 1/4" = 1'-0"



MARK	DESCRIPTION	DATE
1	ADDENDUM #1	27 OCT 21
CD	CONSTRUCTION DOCUMENTS	07 OCT 21

PROJECT NO: 20203351
DRAWN BY: JCE
CHECKED BY: TJG

COPYRIGHT:
All plans, specifications, computer files, field data, notes and other documents and instruments prepared by EAPC, as instruments of service shall remain the property of EAPC. EAPC shall retain all common law, statutory and other reserved rights, including the copyright there to.

DRAWING TITLE
ROOF FRAMING PLAN