

DATE: September 2, 2021

RE: ADDENDUM #1

PROJECT: Becker County Highway Department Facility
Phase Two

OWNER: Becker County, MN

ARCHITECT: OERTEL ARCHITECTS, LTD.

CONSTRUCTION MANAGER: McGOUGH

BID DATE: September 8, 2021, 1:00 pm
Becker County Board Room

The following modifications, deletions and additions shall append and become an integral part of the Contract Documents issued for this project. Where any portion of the Contract Documents is modified, deleted, added or voided, the unmodified portion of the Work shall remain in effect. The onus is on all contractors and sub-contractors/suppliers to cross-reference all items listed and determine for themselves the Work effected by the addendum items.

This addendum is 2 pages with 4 pages of attachments.

NOTES TO CONTRACTORS AND CHANGES TO CONTRACT DOCUMENTS:

1. **The bid date has changed to Wednesday September 8th, 2021 at 1:00 pm.**

CHANGES TO THE SPECIFICATION SECTIONS:

1. **Section 03 41 00 Precast Structural Concrete**
3.1 Installation. I. Add: Provide sealant at all structural precast joints above the Wash Bay only, including the perimeter precast roof to precast wall joint.
2. **Section 03 45 00 Precast Architectural Concrete**

1.2 Summary B.2. Eliminate reference to recycled content.
1.2 Summary Add F. All electrical work to be surface mounted.

2.2 Mix Design 3. Clarification: Exposed aggregate finish to be water wash exposed aggregate.

2.4 Steel Connection Materials. Clarification. Zinc-Coated Finish to be supplied where noted on drawings. Shop Primed Finish to be provided unless otherwise noted.
3. **Section 04 22 00 Unit Masonry**
2.3 Stone Veneer System. Eliminate this section in its entirety.
3.2 Laying Masonry walls. Add H. Place vertical cmu expansion joints at maximum 24' o.c. at interior cmu walls. Locate at openings or 2' from corners where applicable. Locations to be verified in field by Architect.

CHANGES TO THE DRAWINGS (two pages)

1. **A1.1, A1.2, A1.3 Building and Partial Floor Plans.** Dimensions for stoops have been added to Architectural plans for accessibility code compliance. Disregard dimensions noted on S1.1 and S1.2.
2. **A1.1 Building Plan.** The quantity of steel supports for the shelf mezzanine along the north wall (grid A) has been updated to match that shown on structural. See S1.3 for actual dimensions/locations of supports.
3. **A1.1. Building Plan.** Add (3) bollards at vehicle wash equipment area. 6" diam, 4' high, bolt-down.
4. **A5.2. Details 1 and 2.** Parapet Ladders. All steel to be galvanized. Treads and intermediate landing to be open grating as noted.
5. **A6.1 Details.** Add sheet in its entirety. Details include:
 1. Weld plates at the vehicle maintenance floor, and
 2. Steel plates at the overhead door surrounds.
6. **S5.2 Details 3 and 4.** Either detail may be followed for steel connection to precast panel. The need for a beam pocket shall be determined by the precast supplier.
7. **S5.2 Details 6.** The crane rail support detail is for the two E-W crane rails shown on S1.5.
8. **S5.3 Detail 9.** The HSS sander support beam is to be continuous between supports at entire mezzanine. HSS to be provided and installed by steel supplier.
9. **S5.3 Detail 15.** The continuous C12x20.7 is required at locations along grid F where the upper exterior wall face is offset from lower wall, grids 2 to 3.4. The vertical C6 members, along with kickers, should be located along grid F at 6'-0" maximum spacing. Contractor to coordinate locations along this length so embed plates in precast are spaced accordingly. The two channels as per detail 'note' are to be provided and installed at locations where the sunshades require support. Contract to coordinate locations with sunshade supplier.

APPROVED EQUALS

All approved equals are subject to compliance with requirements listed in the specifications and conditions shown on drawings. Include the following products, manufacturers or suppliers for each respective section:

None

END OF ADDENDUM #1



6.18.2021	DD SET
8.10.2021	STRUCTURAL BID SET
10.8.2021	FINAL BID SET

FOR REFERENCE ONLY

BUILDING PLAN

A1.1



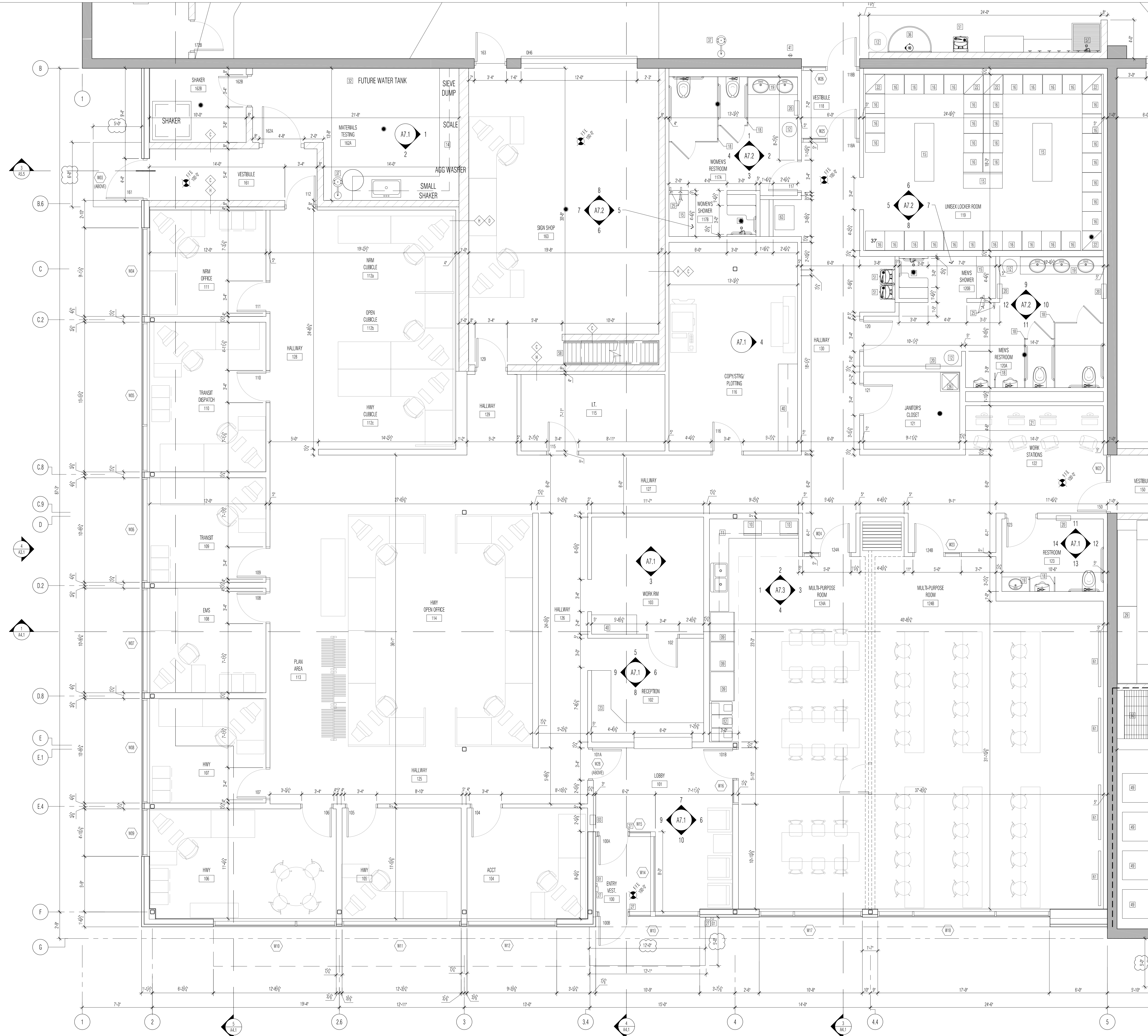
BECKER COUNTY SUMMARY:	
<u>BUILDING SQUARE FOOT SUMMARY:</u>	
OFFICE AND SUPPORT AREA =	7,800 S.F.
MAINTENANCE AREA =	8,284 S.F.
SHOP AREA =	2,626 S.F.
VEHICLE STORAGE =	23,328 S.F.
WASH BAY =	2,520 S.F.
TOTAL (MAIN BUILDING) =	44,558 S.F.
ALTERNATE LEAN-TO =	1,710 S.F.
ALTERNATE TRANSIT STORAGE =	7,776 S.F.

PLOTTED: 2-22-2001 FILE NAME: A1.1 2000.d

FOR REFERENCE ONLY

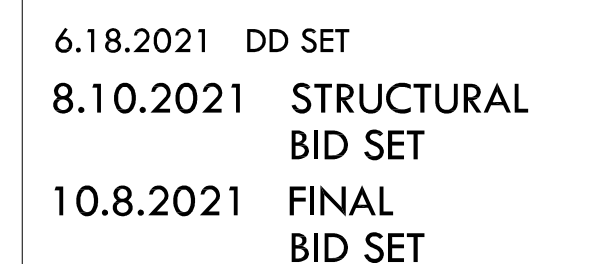
I HEREBY CERTIFY THAT THIS
DOCUMENT WAS PREPARED
BY ME OR UNDER MY DIRECT
SUPERVISION AND THAT I AM
A DULY REGISTERED ARCHITECT
IN THE STATE OF MINNESOTA

DEBRA L BRANDWICK



WALL TYPES	
1	3/4" METAL FRAMING w/ 1/2" LAYERS OF EPS INS. EACH SIDE - PROVIDE SOUND BATT INSULATION
2	1/2" METAL FRAMING w/ 1/2" LAYERS OF EPS INS. EACH SIDE - PROVIDE SOUND BATT INSULATION
3	1/2" PRECAST CONCRETE INDOOR/OUTDOOR
4	1/2" PRECAST CONCRETE INDOOR/OUTDOOR
5	1/2" INSULATED ARCHITECTURAL PRECAST CONCRETE WALL PANEL
6	METAL FRAMING w/ INSULATION FOR GUTTER HANGERS ON PANEL MINIMUM OF 1/2" METAL FRAMING ON BOTH SIDES w/ INSULATION BETWEEN W/ 1/2" LAYERS OF EPS INS. EACH SIDE AND 1/2" EPS INS. ON BOTH SIDES - PROVIDE SOUND BATT INSULATION
7	METAL FRAMING w/ INSULATION FOR GUTTER HANGERS ON PANEL MINIMUM OF 1/2" METAL FRAMING ON BOTH SIDES w/ INSULATION BETWEEN W/ 1/2" LAYERS OF EPS INS. EACH SIDE AND 1/2" EPS INS. ON BOTH SIDES - PROVIDE SOUND BATT INSULATION

BUILDING PLAN NOTES	
1	1/2" METAL FRAMING w/ 1/2" LAYERS OF EPS INS. EACH SIDE - PROVIDE SOUND BATT INSULATION
2	1/2" METAL FRAMING w/ 1/2" LAYERS OF EPS INS. EACH SIDE - PROVIDE SOUND BATT INSULATION
3	1/2" PRECAST CONCRETE INDOOR/OUTDOOR
4	1/2" PRECAST CONCRETE INDOOR/OUTDOOR
5	1/2" INSULATED ARCHITECTURAL PRECAST CONCRETE WALL PANEL
6	METAL FRAMING w/ INSULATION FOR GUTTER HANGERS ON PANEL MINIMUM OF 1/2" METAL FRAMING ON BOTH SIDES w/ INSULATION BETWEEN W/ 1/2" LAYERS OF EPS INS. EACH SIDE AND 1/2" EPS INS. ON BOTH SIDES - PROVIDE SOUND BATT INSULATION
7	METAL FRAMING w/ INSULATION FOR GUTTER HANGERS ON PANEL MINIMUM OF 1/2" METAL FRAMING ON BOTH SIDES w/ INSULATION BETWEEN W/ 1/2" LAYERS OF EPS INS. EACH SIDE AND 1/2" EPS INS. ON BOTH SIDES - PROVIDE SOUND BATT INSULATION

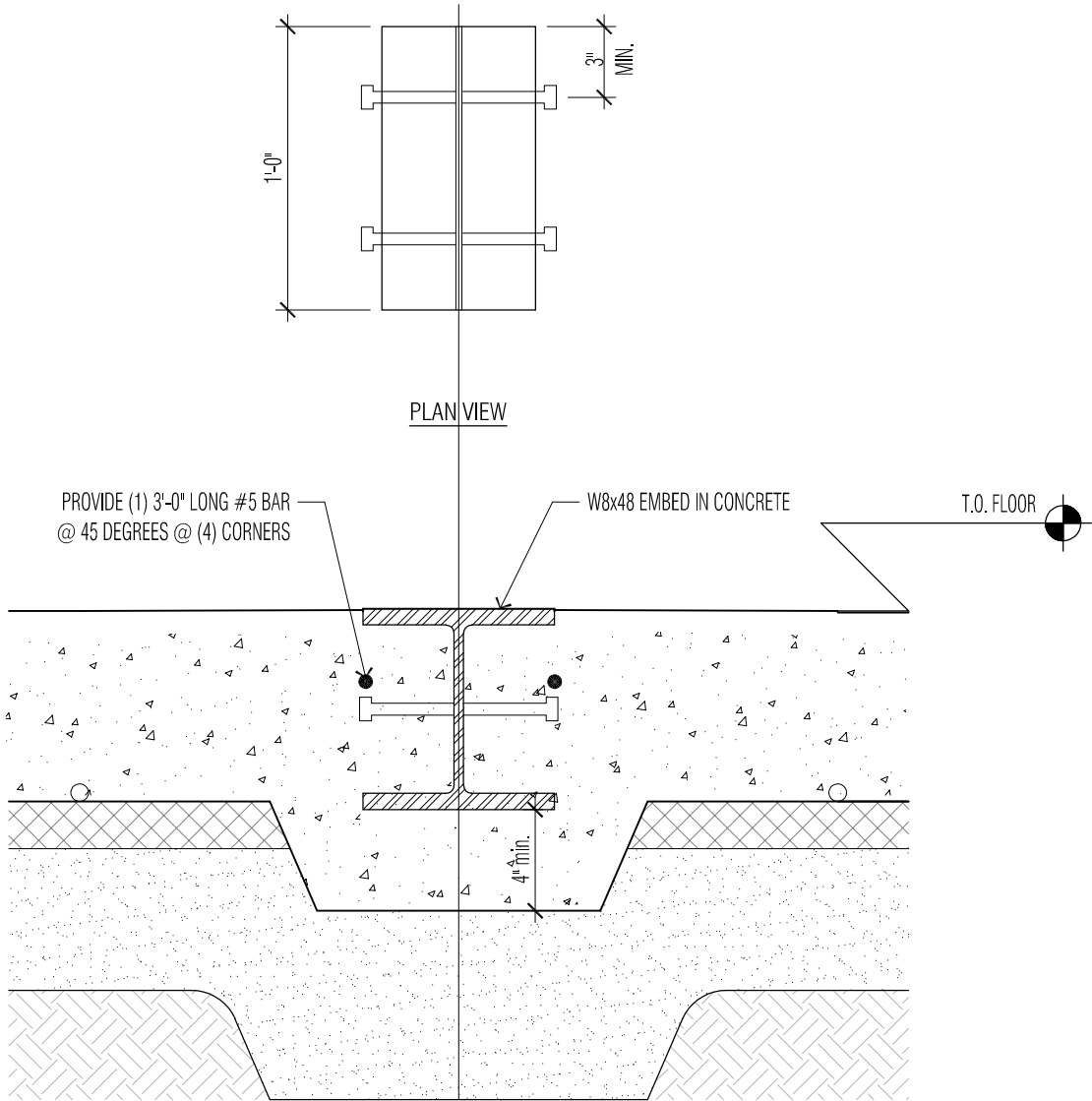


FOR REFERENCE ONLY

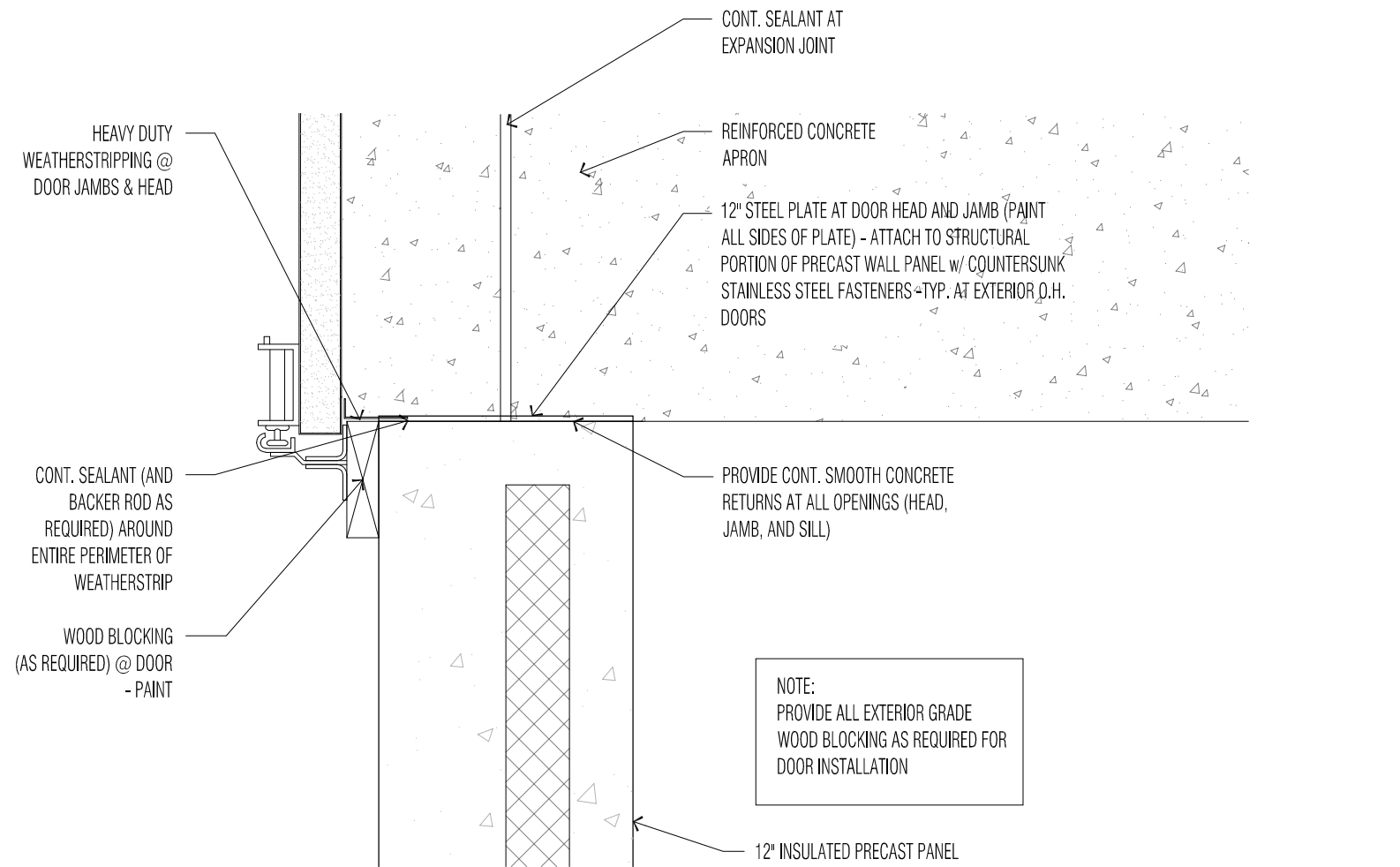
SHEET NO: 1

A1.3

[illegible]



1 EMBEDDED WELDING ANCHOR PLATE
1 1/2" = 1'-0"



2 DETAIL
AT OVERHEAD DOORS
1 1/2" = 1'-0"