

QUARTERLY UPDATE

Representing Bricklayers • Stone Masons • Tile Layers • Marble Masons • Terrazzo • Blocklayers • Finishers
Shopworkers • Cement Masons • Pointers/Cleaners/Caulkers • Concrete Products Specialists

MARCH 2024



Welcome Keith Stebleton NW Minnesota & North Dakota New Business Rep

Keith Stebleton is from a small town outside of Fargo, ND. He began his career as a tender in 1997 with Eicholtz Masonry at the urging of his wife’s uncle. Within three years he completed his apprenticeship and stayed with the same company until the owner’s retirement in 2023, spending the last few years as a foreman.

“I’m looking forward to representing all the members and particularly in signing up new members,” he says.

During his time away from the job, Stebleton readily admits to “spending way too much time and money fixing up old cars.”

Stebleton will fill the position of the retiring Randy Carlson.



Kudos to Apprentice Zakary Lindgren

Congratulations to 3rd year PCC apprentice Zakary Lindgren, who received an award for outstanding apprentice from the International Concrete Repair Institute. He took home a \$500 trade scholarship to be used for tools and gear. Three apprentices received awards at this event. The other two trades represented were the cement finishers and laborers.



INSIDE:

From the President	2
Training Center	4
Zenith Participants Edge	7
Masonry Institute	9
Events	11

**Save the
Date**

Membership Picnic July 20, 2024 New Location!

Newell Park, St Paul, MN

Look for more info in the June newsletter.
Come prepared to have some summertime fun!

Women in Construction Week

Women in Construction Week (WIC) celebrates and promotes the role of women in the construction industry. National Association of Women in Construction (NAWIC) held the first WIC Week in 1998 and it has grown and expanded each year since.

This year's theme, 'Keys to the Future', celebrates the strength and knowledge of women and the vital role they play in shaping the future of the construction industry.

Construction firms of all sizes and types are encouraged to participate in WIC Week and show their support for their women employees.

For more information, please visit the NAWIC page here. <https://wicweek.org>.



Free Membership for U.S. and Canadian Members

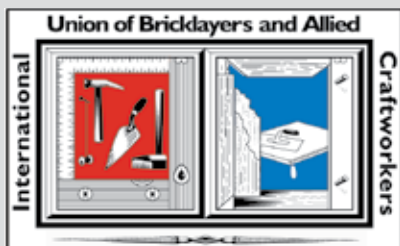


Do you share a passion for the outdoors and want to conserve places to hunt and fish, both now and for future generations? As a longtime supporter of USA's mission to expand and improve access to wildlife habitats, BAC became a USA Charter Union in August 2012, entitling BAC members to join USA absolutely free. With free USA membership, you'll enjoy the following benefits:

- 4 Issues per year of The Union Sportsmen's Journal digital
- 1-Year MyTopo.com online mapping subscription
- E-newsletter with tips and special offers
- Money-saving discounts on outdoor gear and services
- Chances to win fantastic prizes and trips all year
- Personalized USA membership card (electronic)
- Access to "Members-Only" section of the USA website
- Opportunity to participate in USA's Boots on the Ground conservation projects



How to join: Go to www.JointheUSA.com – under "Membership Level," be sure to select "Free Charter Partner Membership." Complete and submit the rest of the form and you're a USA member.



BAC LOCAL 1: 612-379-2966 BAC INTERNATIONAL UNION: 1-888-880-8222

GENERAL INFORMATION: BAC1MN-ND.org

APPRENTICESHIP AND TRAINING: BACtraining.org or phone 763-404-8345

BENEFITS: Check the Zenith American Solutions website: zenith-american.com

Call 651-256-1801 or 1-800-879-4412

FROM THE PRESIDENT



Doug Schroeder,
President/
Secretary-Treasurer

Updated Changes to the Constitution May Affect Secretary/Treasurer Position

The Local will be updating its constitution this year. The last time the constitution was updated was in 2002. Needless to say, we are long overdue. A draft of the constitution will be posted on the website and at meetings in the coming months. Some of the proposed changes will be of the officers of the Local.

Currently there is the President/Secretary Treasurer, Executive Vice President and the three Vice Presidents. The new officers will be President, Secretary Treasurer as a paid position and the three Vice Presidents. The other changes to the constitution will be updating the local name to include South Dakota. The remaining changes will incorporate the resolutions passed at the last IUBAC convention. These changes will be highlighted in the draft so all can easily be seen.

When the draft is available, we will send out a text and post on social media that the constitution is available for review prior to the ballot being sent out for a vote. If the constitution passes, we will schedule nominations for the Secretary Treasurer position.

Organizing efforts have been ongoing throughout the local. We have several campaigns ongoing and new ones on the horizon. We recently had our new organizing committee training and will meet regularly to discuss new efforts. If you are interested in becoming part of the organizing committee, please send us an email and we will add you on the list for future training.

Membership Picnic Save-The-Date

The Membership Engagement Committee has scheduled the annual picnic to take place on July 20, 2024, at Newell Park in St Paul, MN. All are welcome and encouraged to bring

your family. Please check our June newsletter and the website for further information.

Send Us Your Jobsite Photos

Members, we are still looking for jobsite photos for the website and social media. If you are working on an interesting project or working with new materials, we would like to hear about it. Just give us a call and we can stop at your site and take photos, or you can take them yourself and submit them to info@bac1mn-nd.org.

Are You Out of Work?

Do not forget to check in on the out-of-work list monthly. Simply call the office and leave your name, phone number, last employer and how long you have been laid off and we will update your name on the out-of-work list.

Tax Time Again

It is tax time again, the local has an IRA option for you if you are looking for savings for your future. Check out this link for more information. <http://tinyurl.com/3dxdm7y8> or call 763-273-5187 to speak with a financial advisor.

Zenith Participant Edge

Zenith Participant Edge can be your one stop resource for all your benefits. Here are some frequently asked questions that will help you to get rolling with Participant Edge. (see page 6 for more information).

Vacation Fund Distribution

Vacation fund distribution will happen on May 1, 2024. If you are looking for more information on how to transfer the balance on your card to your checking or savings account, then here is a helpful link. <http://tinyurl.com/4wu3m8s7>. (see page 6 for more information).

Upcoming Dates

Reminder to check the calendar on page 11 for upcoming allocation meetings and Gold Card events in your area.

Are you using a Zenith American Solutions HRA, FSA or an HSA?



The 15-minute video below will explain the benefits of each, eligible expenses, substantiation, and important information on reimbursements. Learn also how to maximize these benefits.

Scan the QR code below or log on to: <http://bit.ly/48Lzimh>

Stay informed. Connect today.



Expanded Training Opportunities in 2024

As we approach March, the Training Center is gearing up for its busiest month yet. Alongside our regular metro apprenticeship classes, we are offering daytime block training sessions for PCC apprentices and others living outside the metro area.

Welcome our two new instructors

Excitingly, we've recently welcomed two new instructors: Justin Korbek, who will lead PCC apprentices, and John Kent, our expert in brick instruction.



Justin Korbek



John Kent

On March 25 we will begin our first 6-week pre-apprenticeship for those interested in beginning a career in either bricklaying or PCC. In May, we will host our tile pre-apprenticeship. On June 3, we will begin our summer pre-apprenticeship for bricklaying and PCC. If you know anyone who is interested in becoming an apprentice have them register on our website.

But that's not all – we are thrilled to offer a range of upgrade training opportunities, including CPR/First Aid/AED, OSHA 30, and the impactful Mentorship Matters program. If you're a journey-worker eager to expand your skills, head over to www.bactraining.org and sign up for our upgrade training sessions.

Mark your calendars

CPR/First Aid/AED training is scheduled for March 18 in Duluth, kicking off bright and early at 7 a.m. Remember, certifications only last for two years, so now's the perfect time to renew and stay up-to-date with life-saving techniques. Don't miss out on this chance to enhance your skills and make a difference.



APPRENTICE
2024 ————— CONTEST

04.27.
2024

Builds begin 7am
Lunch provided
11:30am - 1pm
Awards at 1pm

5428
INTERNATIONAL PKWY
NEW HOPE 55428

@BAC.MN.ND.TRAINING
WWW.BACTRAINING.ORG

Pre-Apprenticeship

June Brick



Pre-Apprenticeship

June 3 - July 12, 2024

- Free, unpaid 6-week training
- 90% job placement rate
- \$30.97 + benefits/hour starting wage
- Decide during training career path: bricklayer or pointer-cleaner-caulker

Scan to Apply

For more details:
www.bactraining.org/become-apprentice



UNION WOMEN EARN 33% MORE THAN WOMEN WORKING WITHOUT THE SUPPORT OF UNION REPRESENTATION



Comprehensive & Compassionate Dental Care



FROEBER DENTISTRY

Contact us today and experience 25 years of exceptional dentistry.

612.379.2428
froeberdentistry.com

Mention this Union ad and receive \$100 towards any dental service.

New Patients Only. Some exclusions may apply.

SOME DAY YOU WILL RETIRE. Will you be financially sound?

Advanced Advisor Group (AAG) will educate you about your options.

- PENSION
- INVESTMENT
- LIFE INSURANCE
- LONG-TERM CARE



AAG has 25+ years of working with union members in Minnesota*, we understand the complexity of your union and can explain your options simply and clearly.

Call **763-689-9023** today. No obligation. 100% confidential. No minimum dollar amount to begin investing.

*Education Minnesota with over 25,000 members served and over \$1.1 billion in assets under management through affiliate firm EFS Advisors. EFS Advisors & AAG are not affiliated with Education Minnesota. Securities and Investment Advisory Services offered through EFS Advisors. A Registered Investment Advisor. Member FINRA & SIPC. 440 Emerson St N Ste 4, Cambridge MN 55008 - 763-689-9023

Protecting the Rights of Injured Workers Since 1952

- Auto Accidents
- Construction Accidents
- Workers Comp
- Wrongful Death
- Slip & Fall
- Dog Bites

FREE Accident Investigation Services
after hours, call...

- Jim Carey (612) 860-4929
- Harry Sieben (612) 865-9258
- Jeff Sieben (651) 336-1925
- Mark Olive (612) 221-8211
- Ian Carey (651) 336-4005



Personal Injury Law
SiebenCarey
Know your rights™

901 Marquette Avenue • Suite 500 • Minneapolis, MN 55402

knowyourrights.com • 1-800 4-RIGHTS



FREQUENTLY ASKED QUESTIONS

1 How do I access the Participant Edge URL?

<https://edge.zenith-american.com>



From your computer using one of the following browsers: FireFox, Chrome, or Safari.

2 How do I access Participant Edge from my cell phone or tablet?

Download the Participant Edge Mobile Application on your Apple or Android device.



3 How do I register for an account?

If you are a new participant or you have not set up an account, access the website via the URL or Mobile App, click on the Register button and fill in the requested information.

Register

4 I forgot my username or password.

If you forgot your Username or Password, click on the "Forgot your password?" link and fill in the requested information.

5 I'm unable to register for an account, help!

The Username you choose must contain 4 to 15 characters. It may consist of any combination of letters (A-Z) or numbers (0-9).

The Password must contain 8 to 12 characters. It may consist of any combination of letters (A-Z) or numbers (0-9). Spaces, punctuation and special characters are not valid characters.

6 My internet browser won't load the webpage. What do I do?

Participant Edge is best supported by FireFox 34+, Chrome 38+, and Safari 7+.

7 I'm using a supported web browser and the webpage still won't load. What do I do?

Try clearing your browser history as follows:

CHROME

1. At the top of the "Clear browsing data" window, click Advanced.
2. Select the following: Browsing history. Download history. Cookies and other site data. Cached images and files.
3. Click Clear Data.
4. Exit/quit all browser windows and reopen the browser.

FIREFOX

1. From the History menu, select Clear Recent History.
2. From the Time range to clear: drop-down menu, select the desired range. To clear your entire cache, select Everything.
3. Next to "Details", click the down arrow to choose which elements of the history to clear. To clear your entire cache, select all items.

SAFARI

1. Click Safari in the upper left hand side of your screen. In the menu that appears, click Preferences.
2. In the window that appears, click the Privacy tab.
3. Click the button Remove All Website Data.
4. Click Remove Now in the pop-up window that appears.

If clearing your browser history doesn't work, try restarting your computer. If you have tried all trouble shooting tips and are still experiencing difficulties, please contact customer service at 651-256-1800.

THE MN/ND/SD BRICKLAYERS VACATION SAVINGS DEBIT CARD



FREQUENTLY ASKED QUESTIONS

1 How do I access my Vacation Account?

<https://edge.zenith-american.com>



From your computer using one of the following browsers: FireFox, Chrome, or Safari.

Once logged in, select the Vacation Savings button on the left side of the menu.

Select "Login to my Vacation Savings Account"

2 I do not have a Participant Edge Account. How do I register?

If you are a new participant or you have not set up an account: Click on the Register button and fill in the information requested.

Register

3 I'm unable to register for an account, help!

The Username you choose must contain 4 to 15 characters. It may consist of any combination of letters (A-Z) or numbers (0-9).

The Password must contain 8 to 12 characters. It may consist of any combination of letters (A-Z) or numbers (0-9). Spaces, punctuation and special characters are not valid characters.

4 I forgot my username or password.

If you forgot your Username or Password, click on the "Forgot your password?" link and fill in the requested information.

[Forgot your password?](#)

5 How do I access my account from my cell phone or tablet?

Download the Participant Edge Mobile Application on your Apple or Android device.



 App Store

 Google Play

6 How do I use my Vacation Card?

Use it as a Credit Card. Swipe it at the store or enter the card number to pay.

7 Can I transfer money from my Vacation Account into my Bank Account?

Yes. Sign up for direct deposit through your Participant Edge Account or the Mobile Application.

8 Can I take money out at an ATM?

Yes. You can withdraw up to \$300 daily with a \$5.00 fee per withdrawal.

Please Note: other fees may apply

9 When will my Vacation Balance be loaded onto the card?

A payout of Vacation benefits occurs twice each calendar year.

The first payment will load to the card on or about May 1st of each calendar year, 70% of the amount collected in your Vacation Fund account during the previous calendar year, less any expenses or charges assigned to the account.

The second payment will load to the card on or about December 1st of each calendar year, 30% of the amount collected in your Vacation Fund account during the previous calendar year, less any expenses or charges assigned to the account.

10 What if my card gets declined at a Merchant?

Due to high fraudulent behaviors, purchases at Clock, Jewelry, Watch and Silverware Stores will be denied.

If this occurs or you want to make a purchase at the stores noted above, you will need to sign up for direct deposit on your account.



IMI Masonry Minute

KEY IMI ACTIVITY HIGHLIGHTS

IMI North Central Regional Director Mark Swanson is focused on providing masonry education and consulting, promoting the use of masonry and skilled union craftworkers, with the aim to create more work opportunities for BAC Local 1 MN/ND/SD members and signatory contractors.

PROJECT SUPPORT

- **Target Companies, Minneapolis, MN** – Swanson received feedback from guidance response:
- **Anderson Engineering, Minneapolis, MN** – Swanson advised on expanding a concrete wall to accommodate a masonry cavity wall system, which was favored for its durability.

..... *This is very helpful and I am thankful for the options that you provided and the additional factors you highlighted. I'll whip up a scope of work and send it to you for review.*

..... *Thanks,*
..... Sonny Fite | Principal Engineer |
..... Target Properties

- **LHB, Duluth, MN** – Swanson providing guidance on making openings in existing structural clay wall. The lack of documented material properties makes reusing clay tile as critical structural elements difficult. Moisture, reinforcement requirements, structural demands, and tensile limitations add complexity to the existing condition assessment.
- **ESG Architects, Minneapolis, MN** – Swanson provided moisture control guidance to Larry Koch, Vice President, Director of Quality Assurance, on a GC who was asked about why ESG does not require testing for brick cavity walls for drainage. Well designed, detailed and installed masonry wall systems do not need testing if no failure or sign of water is present.

IMI EDUCATION AND PROGRAMS

- **IMI Structural Webinar Series, December 6** – Swanson hosted Sam Rubenzer of Forse Consulting who presented on Masonry & Embodied Carbon SE 2050. More than 600 registered for this webinar on what is becoming an increasingly talked about subject - embodied carbon.

Contractor Education Webinar Series:

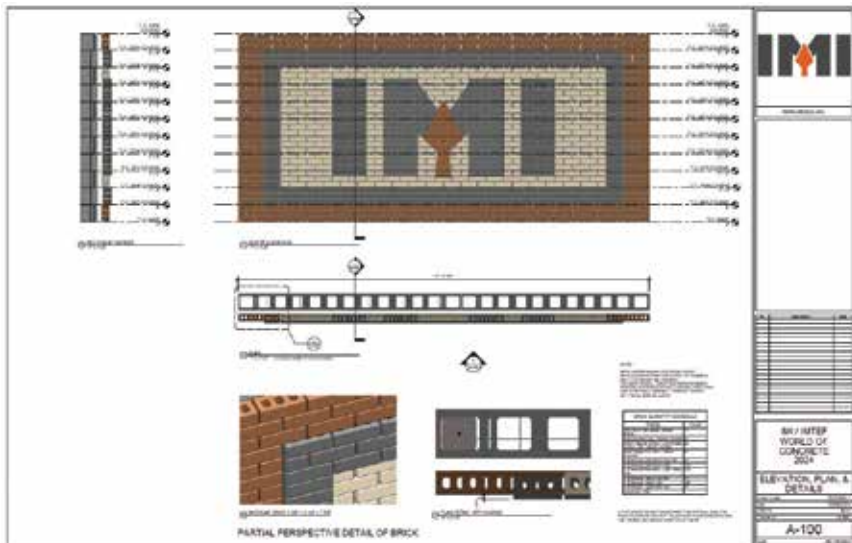
December 14 –

Swanson hosted the signatory contractor webinar entitled, Technology Solutions for Contractors: Part 4: Using Laser Scanning Technology to Improve

Coordination on Projects. Tom Cuneio of CadBlox and Ken Fronheiser of Keystone Precision Solutions presented several examples where 3D modeling, and laser scanning identified corrective work and who was responsible for it and negotiated before the masonry was installed. Technology can help us build it, before we actually build it to avoid costly conflicts and delays in the field.



- **IMI Structural Webinar Series, January 17** – Swanson hosted Sam Rubenzer of Forse Consulting who presented on Mastering Masonry Design: Essential Resources, Codes, and Tools highlighting many of the resources that IMI provides to the design and construction community. More than 1,000 people registered for this webinar.
- **IMI National Structural Masonry Webinar Series, February 7** – Swanson hosted Brady Golinski, Structural Engineer from FORSE Consulting, who presented “Masonry Notes, Details, & Prototypes.” More than 570 attended this webinar program.
- **MN Historic Society (MNHS)** – Swanson has helped coordinate and set up a historic mortar workshop for the design and construction community in conjunction with the MN Historic Society for upcoming April. Manager of Operations John Slama, at the BAC Training Center in New Hope along with Swanson have established a relationship with the MNHS from their efforts on the Hot Lime Mortar workshop a couple of years ago.
- **World of Concrete – IMI/IMTEF Mockup** – Swanson assisted with the design of the WOC build this year in Las Vegas. Swanson used the HIVE IMI Masonry Library to construct the virtual mockup in the Revit software.



reinforcement lap splices in masonry walls. The goal of this study is to offer recommendations to update the 2012 Standard Practice for Bracing Masonry Walls Under Construction and the 2028 TMS 402/602. Once these code changes are approved and adopted, it will lower both material and labor costs for structural masonry wall assemblies while limiting the number of units a craftworker needs to lift above their shoulders.

Additionally, IMI is involved in testing that would raise the maximum pour height for low-lift grouting from 5'-4" to 10'-8." Raising the grout pour heights would limit the number of rebar laps required in an assembly and allow for walls to be constructed above the top of typical door openings before the grout needs to be placed in the wall. All of these positive changes would make masonry

more efficient and cost effective while ensuring the health and safety of craftworkers.

UPDATES FROM IMI NATIONAL

New Structural Masonry Testing Aims to Make Materials More Efficient, Cost Effective, and Easier to Install

Excessive rebar lap lengths in CMU walls not only add cost to a masonry project, but also make for a tough day for BAC craftworkers who have to lift the units over higher-placed rebar. IMI, along with our structural masonry coalitions and other industry partners, is spearheading a research project with the University of Louisville Research Foundation to evaluate

TRAINING PROGRAMS FOR YOU

Training, quality, and safety is what sets the BAC apart from our competition. To learn more about training programs available to BAC members, visit www.IMTEF.org and www.bactraining.org.

2024 IMI STRUCTURAL MASONRY WEBINAR SERIES 12 PM ET

March 6th

[Debunking The Myths of Single Wythe Construction](#)

April 3rd

[Structural Fundamentals: Sustainable Masonry Strategies \(NEW\)](#)

May 1st

[The Power of Designing Structural Masonry with Software](#)

June 5th

[Optimizing Masonry Projects Through Design Assist \(NEW\)](#)

July 10th

[Structural Fundamentals: Masonry Movement Joints](#)

August 7th

[Structural Fundamentals: Masonry Seismic Design](#)

September 4th

[Innovative Structural Masonry Solutions](#)

October 2nd

[Foundation Design with Concrete Masonry \(NEW\)](#)

November 6th

[Innovations in Perforated Masonry Screen Wall Design \(NEW\)](#)

December 4th

[Structural Fundamentals: Masonry Lintel Design](#)



Deceased Members

#1 ND - Fargo

Charles Siggerud

#1 SD - Sioux Falls

Robert Blue

Toby Faehnrich

#2 MN - Mpls

Norman Bunting

Francis Hanrahan

Dale Hanson

Michael Herbert

Herbert Kunze

James Linder

David Oien

#11 MN - Mankato

Patrick Moore



New Members

Daniel Andersen

William Bergen

William Berndt

Richard Brasier

Cale Collins

Elliot Ekvall

Matt Erickson

Noel Galvan

Lorenzo Gonzalez

Adriaan Gouws

Jelani Haye-Matthews

Abraham Hernandez

Eric Hernesman

Hayden Johnson

Michael Kearney

Devin Koski

John Lopez Lozano

Caleb Meggitt

Arianna Mellen

James Mix

Jonathan Pena Solis

Griffin Rochat

Lyle Saunders

Bradley Schroeder

Erik Sonju

Veasna Thong

Jose Topete

Matthew Torres



Retired Members

BAC Local 1 members who have retired in 2023. We are grateful for your dedication to work and we wish you a great future!

Thomas Afdahl

William Baert

Donald Decker

John Dyer

Stephen Falck

Thomas Foley

Mark Granat

Ricky Kingsley

Todd Larson

Kevin Lesto

Mevludin Mustafic

Scott Narragon

James Williams

Have You Been Exposed to Asbestos?

CENTER FOR DIAGNOSTIC IMAGING*



GET A LUNG CANCER SCREENING EXAM TODAY!

This exam is covered by your fund.*

**Verify with your fund before scheduling.*

WE SPECIALIZE IN ANSWERS

TO SCHEDULE, CALL 866.765.7138.

myCDI.com/TwinCities



FOLLOW US ON
facebook



<https://www.facebook.com/BAC1MN.ND.SD>

<https://www.facebook.com/groups/BAC1.MN.ND.SD>

2024 CALENDAR OF EVENTS

Chapter 1-Minneapolis-St. Paul, MN

312 Central Avenue SE, Mpls - 4:30 p.m.
Mar. 11, May 13, June 10, Aug. 12, Sep. 9,
Nov. 11

Chapter 1-Fargo, ND

Dilworth Hi Ho
Tavern: 5:30 p.m. June 25, Sep. 24, Dec. 3

Chapter 1-Sioux Falls, SD

101 S. Fairfax Ave., Sioux Falls Labor
Temple: 6 p.m. Mar. 12, Apr. 9, May 14, June
11, July 9, Aug. 13, Sep. 10, Oct. 8, Nov. 12,
Dec. 10

Chapter 2-Minot, ND

Minot VFW: 7 p.m. Mar. 1, May 8, Aug. 14,
Nov. 13

Chapter 2-Yankton, SD

Alexandria RJ's Sports Bar: 7 p.m.
Apr. 12, June 14, Aug. 9, Oct. 11, Dec. 13
Yanktown VFW: 7 p.m. Mar. 8, May 10, July
12, Sep. 13, Nov. 8

Chapter 3-Duluth-Hibbing- Iron Range, MN

Duluth Labor Center: 5 p.m. Mar. 13, June
12, Sep. 11, Dec. 11
Valentini's Chisholm: 6 p.m. May 8, Aug. 14,
Nov. 13

Chapter 3-Grand Forks, ND

E. Grand Forks American Legion: 7 p.m.
June 24, Sep. 23, Dec 2

Chapter 3-Aberdeen, SD

Aberdeen Central Labor Union: 7 p.m. Mar.
18, May 20, July 15, Sep. 16, Nov. 18

Chapter 4-Rapid City, SD

Rapid City Labor Temple: 6 p.m.
Mar. 1, May 3, June 7, Aug. 2, Oct. 4, Nov. 1,
Dec. 6

Chapter 4-St. Cloud-Brainerd, MN

Brainerd American Legion: 7 p.m.
June 6, Sep. 5, Dec. 5
St. Cloud Labor Home : 7 p.m. May 1, Oct. 2

Chapter 5-Watertown, SD

808 S. Broadway, Watertown VFW:
6 p.m. Apr. 26, Nov. 20

Chapter 6-New Ulm, MN

New Ulm Amer Legion: 7 p.m. Apr. 4

Chapter 8-Rochester-Faribault, MN

Rochester, Eagles Club: 7 p.m.
Mar. 4, Sep. 9, Dec. 2
Faribault Eagles Club: 7 p.m. Nov. 4

Chapter 11-Mankato, MN

Mankato, Mankato Eagles Club:
7 p.m. Mar. 7, June 6, Sep. 5, Dec. 5

Chapter 15-Bemidji and ND

Bemidji, Eagles Club: 5 p.m. Mar. 14,
May 9, June 13, Aug. 8, Sep. 12, Nov. 14,
Dec. 12

GOLD CARD DINNERS

Letters will be mailed.

Chapter 1-Minneapolis-St. Paul, MN

Delta Hotels-Mpls. NE, 1330 Industrial Blvd
NE, Minneapolis: 11 a.m. July 11

Chapter 1-Fargo, ND

West Fargo TBD: 6
p.m. Mar. 19

Chapter 3-Duluth-Hibbing- Iron Range, MN

Duluth Holiday Inn: 6 p.m. Oct. 11
Valentini's Chisholm: 5 p.m. Oct. 12

Chapter 3-Grand Forks, ND

Speedway Restaurant: 6 p.m. Mar. 18

Chapter 4-St. Cloud-Brainerd, MN

St. Cloud Eagles Club: 6 p.m. Apr. 6

Chapter 8-Rochester-Faribault, MN

Rochester Eagles Club: 6 p.m. June 7

Chapter 11-Mankato, MN

Mankato Eagles Club: 6 p.m. Apr. 26

Chapter 15-Bemidji and ND

Bemidji Eagles Club: 6 p.m. Apr. 19

OTHER EVENTS

Retirees' Club Breakfast meetings

Jax Cafe: 9 a.m., Mar. 28, June 27, Sep. 26,
Dec. 5

**Duluth area Retirees' coffee
meetings** The Chalet Lounge: Duluth 9:30
a.m., First Wednesday of each month



Mar. 6, Apr. 3, May 1, June 5, July 3, Aug. 7,
Sep. 4, Oct. 2, Nov. 6, Dec. 4

St. Cloud Retirees' coffee meetings

Brigitte's Café: 9:30 a.m., Third Tuesday of
each month, Mar. 19, Apr. 16, May 21, June
18, July 16, Aug. 20, Sep. 17, Oct. 15, Nov. 19,
Dec. 17

Executive Committee meeting

312 Central Ave., Minneapolis:
9 a.m. Apr. 5, Oct. 4

Semiannual Meeting-All of MN/ND/SD

312 Central Ave., Minneapolis:
9 a.m. Apr. 6, Oct. 5

BAC Member Picnic

Newell Park, St. Paul: Time: TBD, July 20

Metro Area BAC Golf Tournament

Pheasant Acres: 7 a.m. July 27



Duluth BAC Golf Tournament

Grandview Golf Links: 8 a.m. Sep. 7

BAC Holiday Party

Delta Hotels NE Mpls.: 7 p.m. Dec. 9

QUARTERLY UPDATE

QUARTERLY UPDATE

Bricklayers & Allied Craftworkers
Local 1 Minnesota/North Dakota/South Dakota
312 Central Avenue, Suite 328
Minneapolis, MN 55414

7 Corners Printing
to add current
mailing indicia
and Permit #

Quarterly Update is published four times a year by Bricklayers & Allied Craftworkers Local 1 Minnesota/North Dakota/South Dakota to communicate with its members.

Postmaster: Send address corrections to Bricklayers & Allied Craftworkers Local 1 Minnesota/North Dakota/South Dakota, 312 Central Avenue, Suite 328, Minneapolis, MN. 55414.

2024 Legislative Priorities



2023's Legislative session set Minnesota on a path toward becoming the best state for working people in the nation with historic gains in labor standards and protections. Now it's time to continue building a state where every working Minnesotan, no matter what they look like, where they live, or what type of work they do, has a safe workplace, a job with family-sustaining pay and benefits, a dignified retirement, and the freedom to organize and join a union. The Minnesota AFL-CIO's 2024 Legislative Priorities are another step toward that vision.

Protect 2023's Historic Progress

History shows that every time working

people successfully join together to improve their conditions, opponents fight back with an attempt to return to the status quo. We will defend new worker freedoms and protections like paid family and medical leave, expanded union rights like the ban on captive audience meetings, and more.

Crack Down on Worker Misclassification

Working people have an expectation that state and federal laws designed to protect them will apply no matter where they work.

Sadly, far too many employers across industries break the rules to save money by classifying workers as independent contractors while demanding the same expectations as if they were employees. It's time for Minnesota to strengthen and streamline enforcement of our worker misclassification laws to discourage this unfair and illegal practice

Allow Striking Workers to Access Unemployment Insurance

Our nation's labor laws remain heavily skewed in favor of employers – who can temporarily replace workers, stall negotiations, threats, cut off healthcare. It's time to balance the scales between workers and management by allowing

working Minnesotans to access unemployment insurance while on strike.

Supporting our Affiliates & Community Allies

We will also support our affiliated unions and community allies in moving their legislative priorities:

- 40-hour workweek
- ESP Bill of Rights
- ERA
- Healthcare worker anti-retaliation protections
- Hospital safety and transparency
- Infrastructure investments
- MinnesotaCare expansion/public option
- Limit privatization of public services
- Pro-organizing PELRA updates
- Railroad Workplace Safety
- Broadband Standards

To read this article in its entirety, log on to <https://mnaflcio.org/updates/2024-legislative-priorities>.

•

MINNESOTA
afl-cio
A STRONG, UNITED VOICE FOR
MINNESOTA'S WORKING PEOPLE